

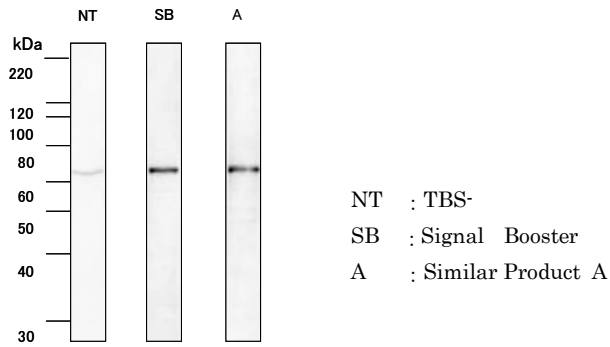
## Examples of western blotting

### Example-1 Detection of Luciferase

Luciferase-expressing HepG2 cell lysate

1st Ab diluted by **Soln. A**: Anti-Luciferase IgG, goat poly., 1/1000

2nd Ab diluted by **Soln. B**: Anti-Goat IgG, donkey HRP-labeled, 1/20000

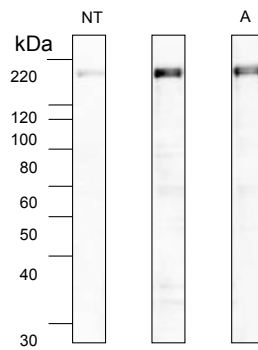


### Example-2 Detection of EGFR receptor protein

A431 Cell Lysate

1st Ab diluted by **Soln. A**: anti-EGFR IgG, mouse mon., 1/1000

2nd Ab diluted by **Soln. B**: anti-mouse IgG, rabbit poly.I HRP, 1/10000

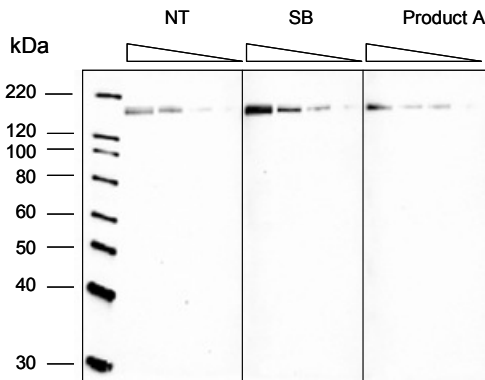


### Example-3 Amount of antigen (EGFR)

A431 Cell lysate (2-fold dilution)

1st Ab diluted by **Soln. A**: anti-EGFR IgG, mouse mon.I, 1/1000

2nd Ab diluted by **Soln. B**: Anti-mouse IgG, rabbit poly.I HRP, 1/10000

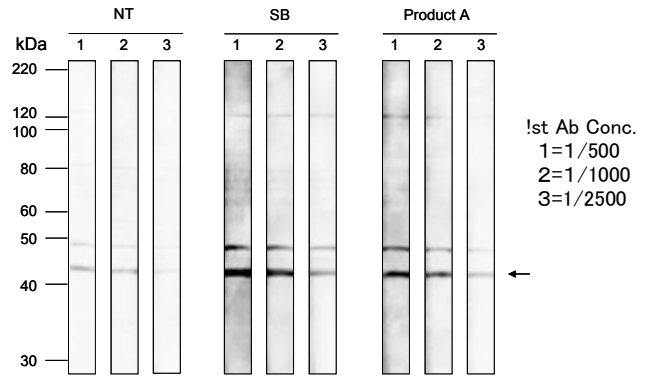


### Example-4 Amount of antibody (actin)

A431 Cell lysate (2-fold dilution)

1st Ab diluted by **Soln. A**: anti-actin, rabbit poly.

2nd Ab diluted by **Soln. B**: anti-rabbit IgG, goat poly. HRP, 1/10000



Due to low specific activity, protein other than actin was stained in this case.