

Additional Experimental Examples

Example-5 detection of Vimentin and comparison with similar products

HuH-7 Cell Lysate

(1st antibody (Soln.A): Anti-Vimentin, mouse mono 1/3000)

(2nd antibody (Soln.B): Anti-mouse IgG, goat poly-HRP, 1/10000)

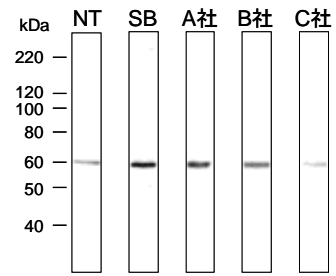
NT: TBS-T

SB: Signal Booster

A: Product A

B: Product B

C: Product C



Example-6 Detection of p53 protein

A431 Cell Lysate

(1st antibody (Soln. A): Anti-p53, rabbit poly, 1/500~1/2000)

(2nd antibody (Soln. B): Anti-rabbit IgG, goat poly-HRP, 1/10000)

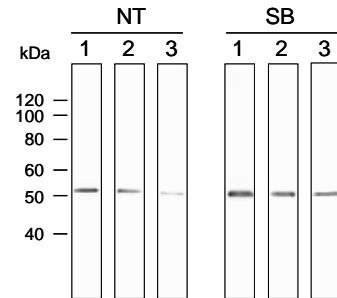
NT: TBS-T

1st antibody 1: 1/500

SB: Signal Booster

2: 1/1000

3: 1/2000



Example-7 Detection of RhoG protein

MDA-MB-231 Cell Lysate

(1st antibody (Soln. A): Anti-RhoG, mouse mon, 1/500)

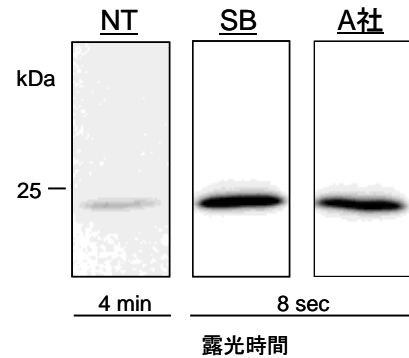
(2nd antibody (Soln. B): Anti-mouse IgG, goat poly-HRP, 1/3000)

*Courtesy of Prof. Negishi of
Kyoto Univ.

NT: TBS-T/3% skim milk

SB: Signal Booster

A: Product A



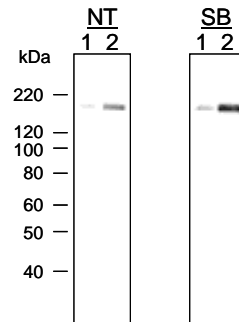
Examples of Phosphorylated Proteins

Example-8 Detection of phospho-EGFR protein

A431 Cell Lysate

(1st antibody (Soln. A): Anti-phospho-EGFR (pY1173),
rabbit mono, 1/1000)

(2nd antibody (Soln. B): Anti-rabbit IgG, goat poly-HRP, 1/20000)



Example-9 Detection of diphospho-ERK (MAPK) protein

S2 cell (insect) Cell Lysate

(1st antibody (Soln. A): Anti-diphospho-ERK, mouse mono, 1/5000)

(2nd antibody (Soln. B): Anti-mouse IgG, goat poly-HRP, 1/10000)

*Courtesy of Prof. Hayakawa
of Saga Univ.

NT: TBS-T/5% BSA

SB: Signal Booster

1: S2 cell lysate

2: S2 cell + cytokine lysate

