

Anti-HBsAg Pre-S2, Polyclonal Antibody

Hepatitis B virus (HBV) expresses three types of surface antigens, i.e. S-, M-, and L-protein. L-protein is composed of S-, Pre-S2, and Pre-S1 region. The deletion of Pre-S1 region forms M-protein and further deletion of Pre-S2 region results in S-protein. So called HBsAg is composed of either S-protein alone or a mixture of S- and M-proteins. The Pre-S1 region is known to be the hepatic cell recognition site and to be important in the HBV infection and Pre-S2 is reportedly known to related HBV entry or carcinogenesis. Pre-S2 region is known to have variation of amino acid sequence depending on genotypes.

The present products are polyclonal antibody against Pre-S2 domain.

General information

Source : White rabbit
 Appearance : liquid form (PBS containing biochemically inactive preservative)
 concentration : 1 mg/mL
 Antigen : Pre-S2 peptide with thioredoxin-tag (genotype C, BCL-AGS2C-02)
 Purification : affinity by Protein A
 Storage : 4°C (for long term storage at -20°C avoid freeze and saw)
 Usage : ELISA (0.5 to 10 µg/mL), Western blot (0.5 to 10 µg/mL)

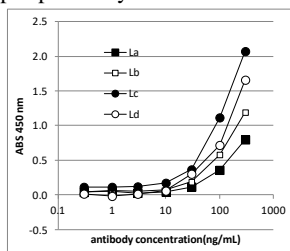
Product variation and product

Product #	Product name
BCL-ABP2-01	Anti-HBsAg-Pre-S2 Antibody, Poly

Antigen specificity

These antibodies bind only to Pre-S2 domain and not to S or Pre-S1 domains

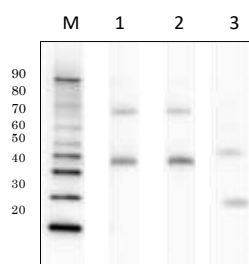
Genotype specificity



The antibody bind to L-antigen of genotype A, B, C and D, but the relative affinity different depending on genotype as shown in the figure.

Examples

Western blot

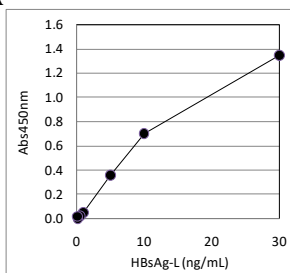


M ; Marker

1. Antibody: anti-Pre-S1 (Code # BCL-ABP1-01)
Antigen: BNC-L (Code # BCL-AG01)
2. **Antibody: anti-Pre-S2 (Code # BCL-ABP2-01)**
Antigen: BNC-L (Code # BCL-AG01)
3. Antibody: anti-S antigen (Code # BCL-ABPS-01)
Antigen: BNC-XT (Code # BCL-AGX02)

Monomer and dimer bands can be seen by the antibodies.

ELISA



ELISA conditon

Immobilized IgG: anti-Pre-S2 antibody (polyclonal, BCL-ABP2-01) at 10 µg/mL

Blocking: k-Block-e (Code#: BCL-BKHE-01)

Detection IgG: anti-Pre-S2 antibody (monoclonal, HRP-labeled) at 25 ng/mL

Antigen: HBsAg L-protein (BCL-AGC-01)

Beacle Inc

E-mail: technical-support@beacle.com

HP: <http://www.beacle.com>