

## Anti-HBcAg antibody, polyclonal

Hepatitis B virus has core structure in which virus genome is contained. C proteins, by self-assembling each other, form the core (or capsid) structure (a hollow nanoparticle). Virus genome (DNA) is encapsulated in the nanoparticle. Thus, HBcAg is a particle composed of C proteins. HBcAg is not generally found in infected serum, but antibody against HBcAg is a diagnostic marker that indicates history of HBV infection.

This product is an antibody against HBcAg.

### General information

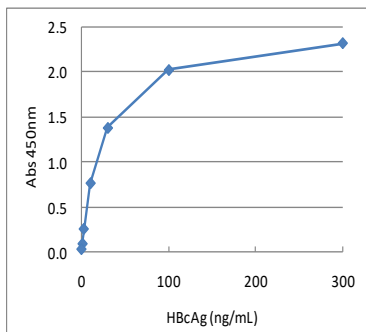
Source : white rabbit  
 Appearance : liquid form (PBS containing biochemically inactive preservative)  
 concentration : 1 mg/mL  
 Antigen : HBcAg, recombinant (E. coli)  
 Purification : affinity by Protein A  
 Storage : 4°C (for long term storage at -20°C avoid freeze and saw)  
 Usage : ELISA (0.1 to 10µg/mL), Western blot (0.1 to 10µg/mL)

### Product variation and product #

Product #	Product name
BCL-ABPC-01	Anti-HBcAg Antibody, Poly

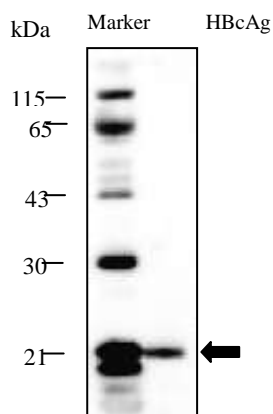
### Examples

#### 1. Sandwich ELISA to measure HBcAg



Immobilized IgG: anti-HBcAg antibody at 1µg/mL  
 Detection IgG: anti-HBcAg antibody-HRP at 0.15µg/mL  
 Antigen to measure: HBcAg (Code#: BCL-HBC-01)

#### 2. Western blot



Sample : HBcAg  
 Primary antibody : anti-HBcAg antibody (Code#: BCL-ABPC-01) at 1µg/mL  
 Second antibody : anti-rabbit IgG-HRP (1/10000 dilution)  
 Detection : ECL substrate