

| Product #  | Product name        | content |
|------------|---------------------|---------|
| BCL-BPM-01 | Blue Protein Marker | 500 µL  |

Range of molecular weight : 16~108 kDa

Composition of Proteins : See below figures and a table

# Blue Protein Marker

Pre-stained protein ladder marker

## User's Manual

Beacle, Inc.  
KYOTO JAPAN

---- Content ----

|                               |   |
|-------------------------------|---|
| (1) introduction .....        | 2 |
| (2) Product information ..... | 2 |
| (3) Storage .....             | 2 |
| (4) How to use .....          | 2 |
| (5) Contact information ..... | 2 |

**Cautions**

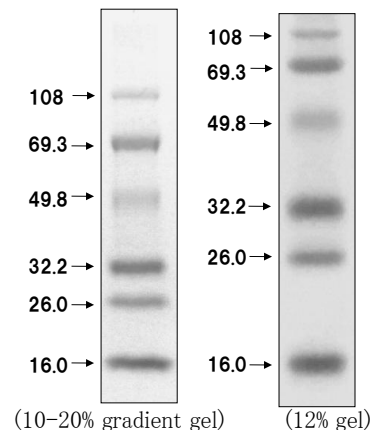
1. Research use only. Do not use for medical purpose.

### (1) Introduction

Blue Protein Marker is the pre-stained protein ladder marker for the use of SDS-PAGE. The proteins are stained by blue color, and useful to monitor by naked eyes the protein movement during the gel electrophoresis and the transfer efficiency from gel to membrane in Western blotting process.

#### ●Features●

1. Easy to monitor the protein during electrophoresis and the transfer efficiency to membrane.
2. Enough molecular weight range (16~108 kDa)
3. Ready-to-use
4. Reasonable pricing



| M.W (kDa) | Protein                |
|-----------|------------------------|
| 108       | $\beta$ -Galactosidase |
| 69.3      | Bovine serum albumin   |
| 49.8      | Ovalbumin              |
| 32.2      | Carbonic anhydrase     |
| 26.0      | Trypsin Inhibitor      |
| 16.0      | Lysozyme               |

Note:  
M.W is shown as apparent size in SDS-PAGE, since stained proteins show the different mobility in SDS-PAGE from unstained ones.

- (3) Storage  
Store at -20°C

### (4) How to use

1. Prepare SDS-PAGE gels equivalent to 10 to 12 %, or 10-20 gradient.
2. Apply 2.5~5 µL of solutions of Blue Protein Marker to SDS-PAGE gel wells directly.
3. During the electrophoresis you can monitor the movement of proteins by the markers.
4. Transfer of proteins to membrane can be done as usual.
5. The transfer of proteins can be monitored by the transfer of marker proteins.

### (5) Contact information

#### Beacle, Inc. (manufacturer and distributor)

14-1 Yoshida Kawaracho, Sakyou-ku, Kyoto, 607-8305 Japan  
E-mail: [technical-support@beacle.com](mailto:technical-support@beacle.com)  
Website: [www.beacle.com](http://www.beacle.com)