



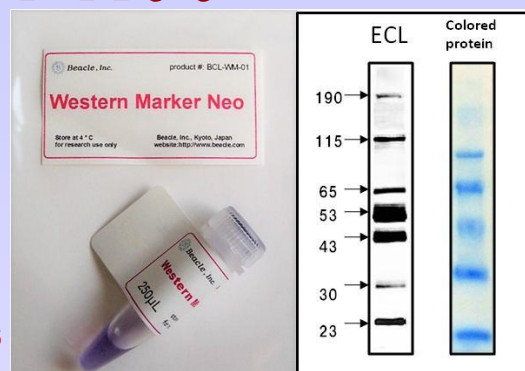
## Protein Marker detected by 2nd antibody for Western blot

# Western Marker Neo

*Ladder protein marker for western blot. The marker contains antibody-binding marker proteins for the detection by ECL substrate as well as pre-stained marker proteins for confirm the transfer efficiency.*

**【Features】**

1. Good signal with any antibody combination
2. Transfer confirmable with included color proteins
3. Enough molecular weight range (21~190 kDa)
4. Ready-to-use
5. Reasonable price



Both protein transfer and ECL detection possible

**【Lineup】**

Low molecular range : 23~115 kDa with 5 color protein marker of 16 to 108 kDa  
 High molecular range : 43~190 kDa with 5 color protein marker of 16 to 108 kDa  
 Wide molecular range : 21~190 kDa with 5 color protein marker of 16 to 108 kDa

**【Lineup】**

Product #	Product name	Content
BCL-WMN-01	Western Marker Neo (low)	250 $\mu$ L
BCL-WMN-11	Western Marker Neo (high)	250 $\mu$ L
BCL-WMN-22	Western Marker Neo (wide)	250 $\mu$ L

**【Related products】**

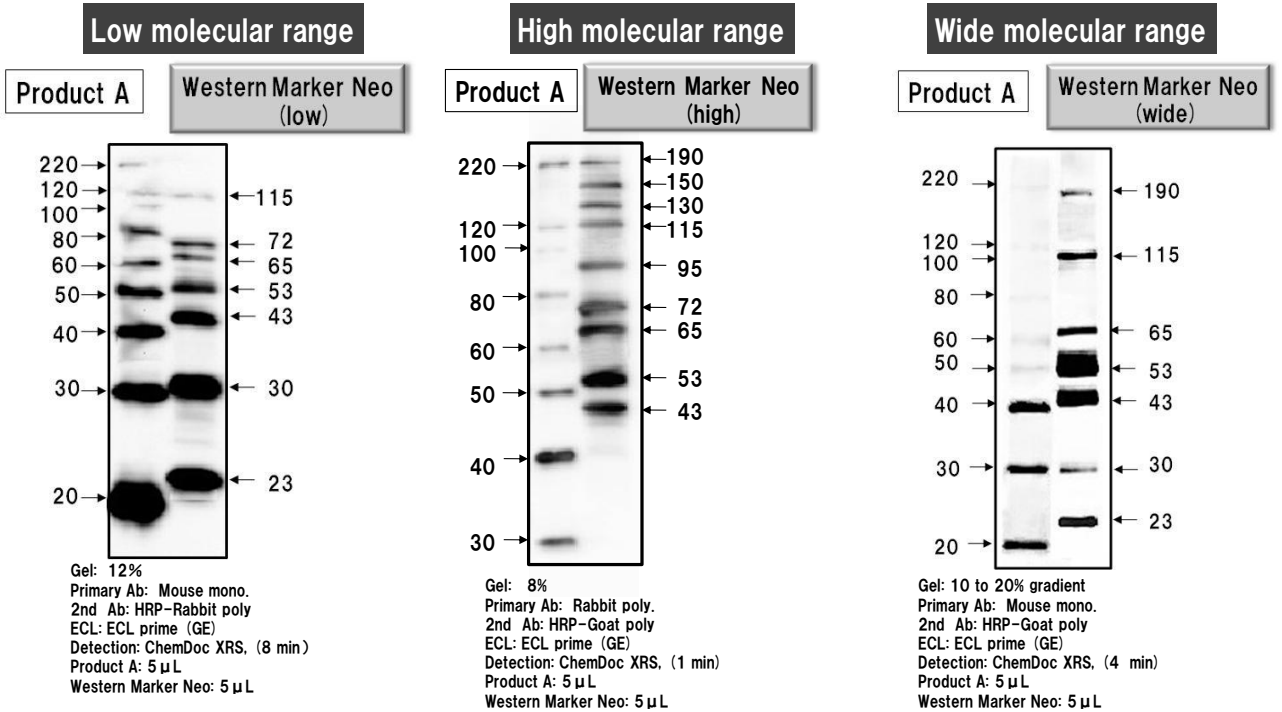
Product #	Product name	Content
BCL-EZQ21 (BCL-EZS21)	Easy-WESTERN-II Quick (or Super)	1kit (50 assays)
	Quick (1hr) or highly sensitive Western Blot kit without using 2nd antibody.	
BCL-125	Signal Booster Solution A & B set	250mL each
	Antigen/antibody reaction enhancer. Two solution type.	
BCL-SBN-01	Signal Booster Neo	250mL
	Antigen/antibody reaction enhancer. One solution protein-free type.	
BCL-BPM-01	Blue Protein Marker	500 $\mu$ L
	Pre-stained protein marker with reasonable price.	
BCL-BKSW-01	Blocking sol. Trial set (western)	20 mL $\times$ 4 set
	Blocking trial set with 4 different agents (casein, degarade casein, BSA and chemical)	
BCL-EEC-01	Easy ELISA Constructor (ab)	1kit (192 assays)
	Antibody-detecting ELISA builder. The built ELISA is highly sensitive and quick	

**【Contact to】**

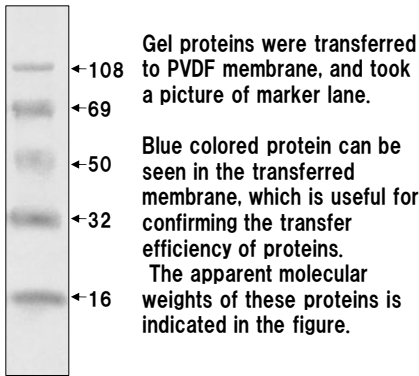
Beacle, Inc. (manufacturer and distributor)  
 14-1 Yoshida-Kawaracho, Sakyou-ku, Kyoto  
 606-8305 Japan  
 website: [www.beacle.com](http://www.beacle.com)  
 E-mail : [information@beacle.com](mailto:information@beacle.com)

# Detail of the products and examples

## Comparison of ladder pattern



## Confirmation of transfer efficiency



## Detailed explanation

### About molecular weight

- The comparison of molecular weight of Western Marker Neo with well-known product A revealed fairly good agreement. But high molecular weight proteins of our product tended to show higher value than that of Product A.
- Higher antibody concentration, which intensify marker signals, may cause additional bands (Low: 20, 46, 60 kDa, High: 60, 105 kDa, Wide: 20, 60, 115 kDa).

### About color marker proteins

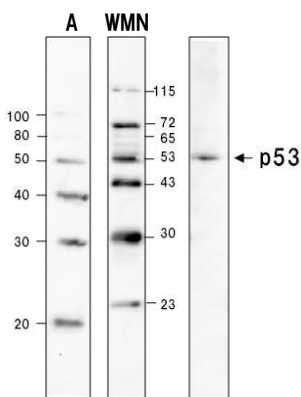
- Five colored marker proteins (M.W. 108, 69, 50, 32, 16 kDa) are mixed in all Western Marker Neo products.
- At the electrophoresis front blue color may be seen due to the residual dye.

### About Signal intensity

- Western Marker Neo is designed to produce equal or stronger signal than Product A especially at higher molecular proteins

Example 1. Western Marker Neo (low)

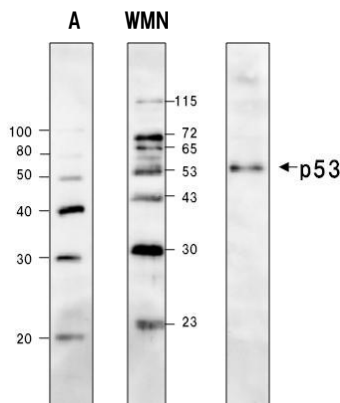
### Detection with 2nd antibody



Gel: 12%, Membrane: PVDF  
 Primary Ab: Rabbit poly  
 2nd Ab: HRP-Goat poly  
 ECL: ECL prime (GE)  
 Detection: ChemDoc XRS (3min)  
 A) Product A: 5 µL  
 WMN) Western Marker Neo: 5 µL

Example 2. Western Marker Neo (low)

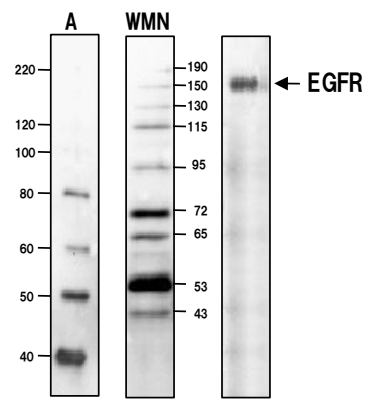
### Detection with Easy-WESTERN



Gel: 12%, Membrane: PVDF  
 Primary Ab: Rabbit poly  
 2nd Ab: Easy-WESTERN  
 ECL: ECL prime (GE)  
 Detection: ChemDoc XRS (3min)  
 A) Product A: 5 µL  
 WMN) Western Marker Neo: 5 µL

Example 3. Western Marker Neo (high)

### Detection with 2nd antibody



Gel: 8%, Membrane: PVDF  
 Primary Ab: mouse mono  
 2nd Ab: HRP-rabbit poly  
 ECL: ECL prime (GE)  
 Detection: ChemDoc XRS (3min)  
 A) Product A: 5 µL  
 WMN) Western Marker Neo: 5 µL  
 With Easy-WESTERN much stronger signal can be seen.