

# Antigen-antibody reaction enhancer

## *Signal Booster* *Signal Booster Neo*

*stable  
enhancement  
effect*



*100% Chemical  
Signal enhancer*



### 【Merits】

1. Higher signal with lower background than the ordinary method. \*1  
(usually about 10-fold increase of sensitivity)
2. Can save precious antibodies and shorten the reaction time. \*1
3. Can be used for Western blotting, ELISA, and other reactions
4. Easy to use (simply dilute antibody with Signal Booster !)
5. 100% protein-free (no interference by proteins for phospho-protein detection or other system) \*2

\*1: The performance of Signal Booster is dependent on the antibody used.

\*2: Signal Booster Neo only features.

### 【How it works】

The main component of this product is polymer and protein or multiple polymers. Polymer increases the frequency of antigen / antibody contact and increases specific antigen-antibody reaction. On the other hand, proteins or other polymers reduce nonspecific binding. As a result, we will raise specific antigen-antibody reactions while lowering the background.

### 【Composition】

- Signal Booster Solution A : Reaction solution for the primary antibody  
 Solution B : Reaction solution for the secondary antibody  
 Signal Booster Neo : Reaction solution for the primary & secondary antibody

### 【Product lineup】

product #	Product Name	Content
BCL-105	Signal Booster 50mL set	各 50mL
BCL-110	Signal Booster 100mL set	各 100mL
BCL-125	Signal Booster 250mL set	各 250mL
BCL-SBN-01	Signal Booster Neo 250mL	250mL
BCL-SBN-02	Signal Booster Neo 500mL	500mL

Either Solution A and Solution B can be also available.

### 【Produced by】

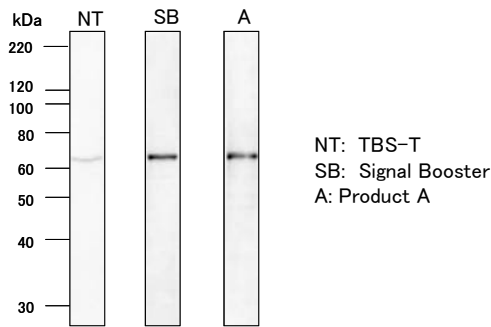
Beacle, Inc.  
 14-1 Yoshida-Kawaracho, Sakyo-ku, Kyoto  
 606-8305 Japan  
 Website: <http://www.beacle.com>.  
 E-mail: [technical-support@beacle.com](mailto:technical-support@beacle.com)

# Examples of western blotting

## Example-1 Detection of Luciferase

Luciferase-expressing HepG2 cell lysate

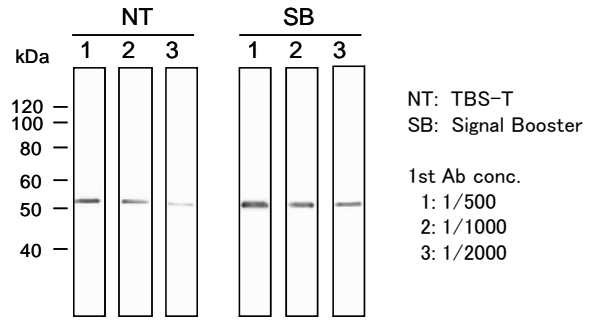
(1st Ab (Soln.A Dilution) : Anti-Luciferase IgG, goat polyclonal., 1/1000)  
 (2nd Ab (Soln.B Dilution) : Anti-Goat IgG, donkey HRP-labeled, 1/20000)



## Example-2 Signal enhance effect for detecting p53 at various antibody concentration

Cell Lysate of A431 Cell

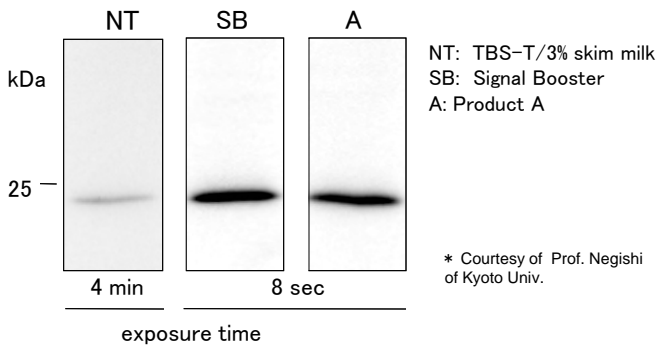
(1st Ab (Soln.A Dilution) : Anti-p53, rabbit polyclonal, 1/500~1/2000)  
 (2nd Ab (Soln.B Dilution) : Anti-rabbit IgG, goat polyclonal HRP, 1/10000)



## Example-3 Detection of Rho G

Cell Lysate of MDA-MB-231 Cell

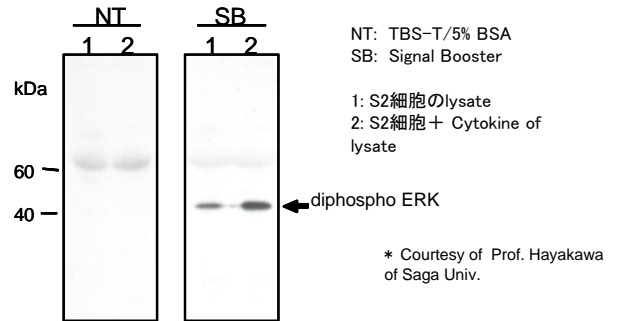
(1st Ab (Soln.A Dilution) : Anti-Rho, mouse monoclonal., 1/500)  
 (2nd Ab (Soln.B Dilution) : Anti-mouse IgG, goat polyclonal HRP., 1/3000)



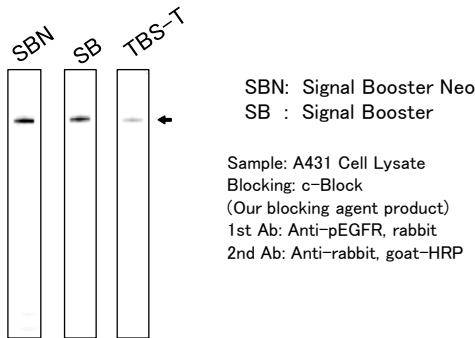
## Example-4 Detection of diphospho-ERK (MAPK)

Cell Lysate of Cultured insect cells (S2 cell)

(1st Ab (Soln.A Dilution) : Anti-diphospho-ERK, mouse monoclonal, 1/5000)  
 (2nd Ab (Soln.B Dilution) : Anti-mouse IgG, goat polyclonal HRP, 1/10000)

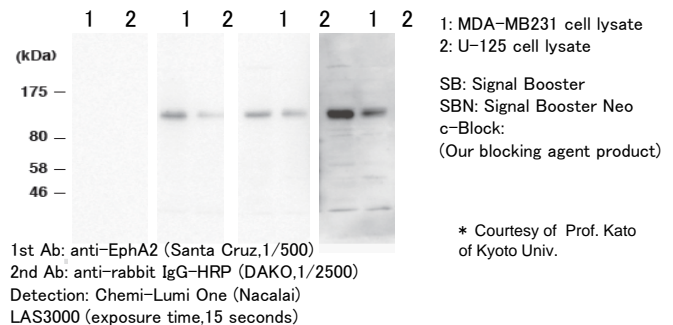


## Example-5 Detection of phospho-EGFR



## Example-6 Detection of Ephrin type-A

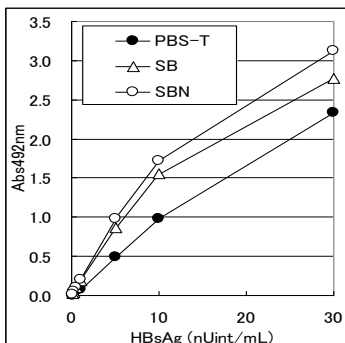
Skim milk TBS-T, Skim milk SB, Skim milk SBN, c-Block SBN



# Examples of ELISA

## Example-7 Antigen-detecting ELISA

Blocking: b-block -e (Our blocking agent product)  
 Capture Ab: mouse monoclonal  
 Detection Ab: anti-mouse IgG-HRP



## Example-8 Antibody-sandwich ELISA

Ab: anti-HBsAg (Rabbit polyclonal)

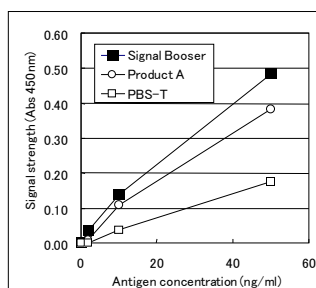
Antigen sample (HBsAg-XT, Cat #:BCL-AG-002)

1st Ab: anti-HBsAg antibody, Mouse mono. diluted in SB Soln.A

or HRP-anti-HBsAg antibody, Mouse mono. diluted in SB Soln.B

2nd Ab: HRP-anti-Mouse IgG, goat poly, diluted in SB Soln.B

Detection system using 1st & 2nd Antibody



Detection system using only 1st Antibody

