

Pre-stained color protein marker with reasonable price

Blue Protein Marker

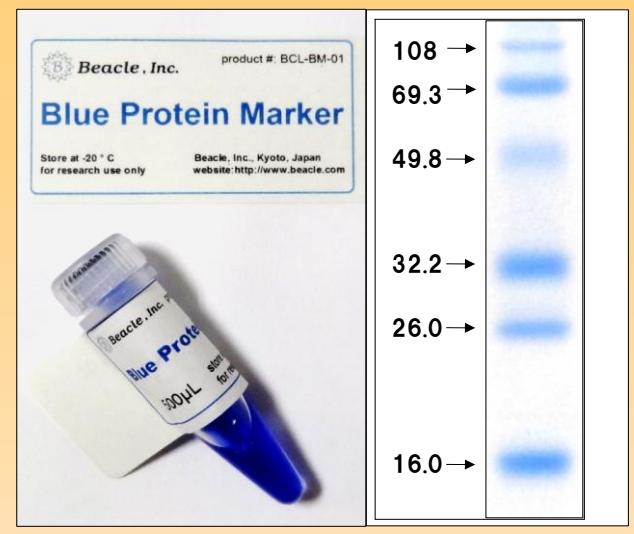
Blue pre-stained marker proteins for SDS-PAGE.
The M.W. range is 16 to 108 kDa
The product is provided at reasonable price.

【Features】

1. Blue colored marker proteins
2. Enough M.W range (16 to 108 kDa)
3. Ready-to-use
4. Low price

【Outline】

Molecular weight range: 16~108 kDa
Protein components: blue pre-stained natural 6 proteins



【Lineup】

Product #	Product name	content
BCL-BPM-01	Blue Protein Marker	500 µL

The recommended application volume is 5 µL, and the product contains marker volume for 100 lanes.

【Related products】

Product #	Product name	content
BCL-EZQ21 (BCL-EZS21)	Easy-WESTERN-II Quick (or Super)	1kit (50 assays)
	Quick (1hr) or highly sensitive Western Blot kit without using 2nd antibody.	
BCL-125	Signal Booster Solution A & B set	250mL each
	Antigen/antibody reaction enhancer. Two solution type.	
BCL-SBN-01	Signal Booster Neo	250mL
	Antigen/antibody reaction enhancer. One solution protein-free type.	
BCL-BPM-01	Blue Protein Marker	500 µL
	Pre-stained protein marker with reasonable price.	
BCL-BKSW-01	Blocking sol. Trial set (western)	20 mL×4 set
	Blocking trial set with 4 different agents (casein, degarade casein, BSA and chemical)	
BCL-EEC-01	Easy ELISA Constructor (ab)	1kit (192 assays)
	Antibody-detecting ELISA builder. The built ELISA is highly sensitive and quick operating.	
BCL-WMN-01, -11, -21	Western Marker Neo (low, high, wide)	250 µL
	Protein marker for western detected by 2nd antibody with colored protein mixed.	

【Contact to】

Beacle, Inc. (manufacturer and distributor)
14-1 Yoshida-Kawaracho, Sakyou-ku, Kyoto
606-8305 Japan
website: www.beacle.com
E-mail : information@beacle.com

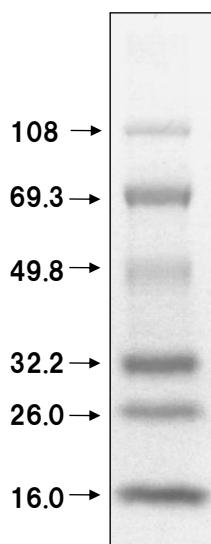
Detail of Product

Protein component

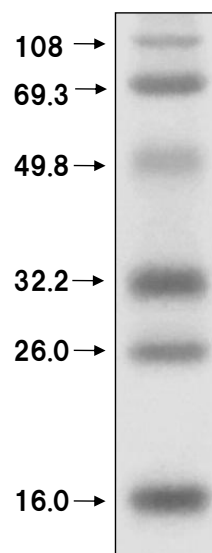
Lysozyme (16.0 kDa), Trypsin inhibitor (26.0 kDa), Carbonic anhydrase (32.2 kDa), Ovalbumin (49.8 kDa), BSA (69.3 kDa), β -Galactosidase (108 kDa)

【note】 In parenthesis, the apparent M.W. observed in SDS-PAGE is shown for each proteins. Due to the blue staining of protein, M.W. is different from that of the original unstained protein.

Pictures of SDS-PAGE gel



Gel: 10 to 20 % gradient gel
Blue Protein Marker: 5 μ L
Gel was photographed directly.



Gel: 12 %
Blue Protein Marker: 5 μ L
Gel was photographed directly.