

Anti HBV Pre-S2 antibody, mouse mono

Catalog No. BCL-ABM2-01

Hepatitis B virus (HBV) expresses three types of surface antigens, i.e. S-, M-, and L-protein. L-protein is composed of S-, Pre-S2, and Pre-S1 region. The deletion of Pre-S1 region forms M-protein, and further deletion of Pre-S2 region results in S-protein. The Pre-S1 region is known to be the hepatic cell recognition site and to be important in the HBV infection processes.

This product, anti HBV Pre-S2 antibody, is a monoclonal antibody that specifically recognize Pre-S2 region and can be used to detect HBV Pre-S2 region. This product provides useful tools in researches for HBV infection and other purposes.

Product Type:	Monoclonal Antibody
Host:	mouse
Source:	Purified from Ascites
Form:	Liquid
	Purified monoclonal antibody, 1mg/mL in PBS
Volume:	100 µg
Concentration:	1 mg/mL
Specificity:	HBsAg L-protein, Pre-S2
Antigen:	HBsAg L-protein,
Isotype:	IgG2b
Storage:	-20°C (do not repeat freeze and thaw)
Cross reactivity:	No cross reactivity to S, Pre-S1 antigens.

Application note:

Recommended use

ELISA, Western Blotting

Recommended dilutions

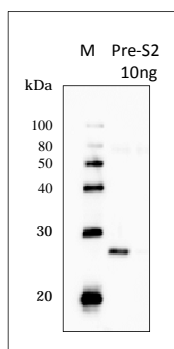
Western blotting: 1-10 µg/ml

ELISA: 0.05 to 0.1 µg/ml

ELISA can be constructed by combination use of anti HBV Pre-S2 antibody, poly (cat#:BCL-ABP-01). As positive control or the standard, HBsAg,Pre-S2 peptides (tagged type, cat#: BCL-AGS2-21, or no-tagged type, cat#: BCL-AGS2-01), or HBsAg-Lprotein (cat#: BCL-AG-001) can be used.

Experimental example:

1. Western blot



M : Marker

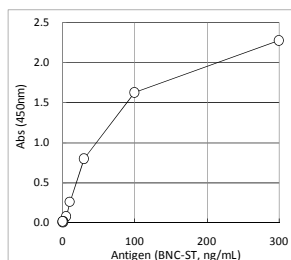
Pre-S2 10ng : HBsAg,Pre-S2 peptide (Tagged by TRX, Product#: BCL-AGS2-21)

Primary antibody : Anti-Pre-S2 monoclonal antibody (BCL-ABM2-01) at 1 µg/mL

Secondary antibody : Anti-mouse IgG Rabbit (HRP -labeled)

2 min exposure

2. ELISA



Solid Phase: Anti-Pre-S2 polyclonal antibody (BCL-ABP-01) 10µg

Blocking: h-Block-e (BCL-BKHE-01)

Antigen: BNC-ST (BCL-AGS-02)

Detection: Anti-Pre-S2 monoclonal antibody (BCL-ABM2-01), HRP-labeled at 1µg/mL

Beacle Inc.

E-mail: technical-support@beacle.com

HP: <http://www.beacle.com>